

you can
Canon

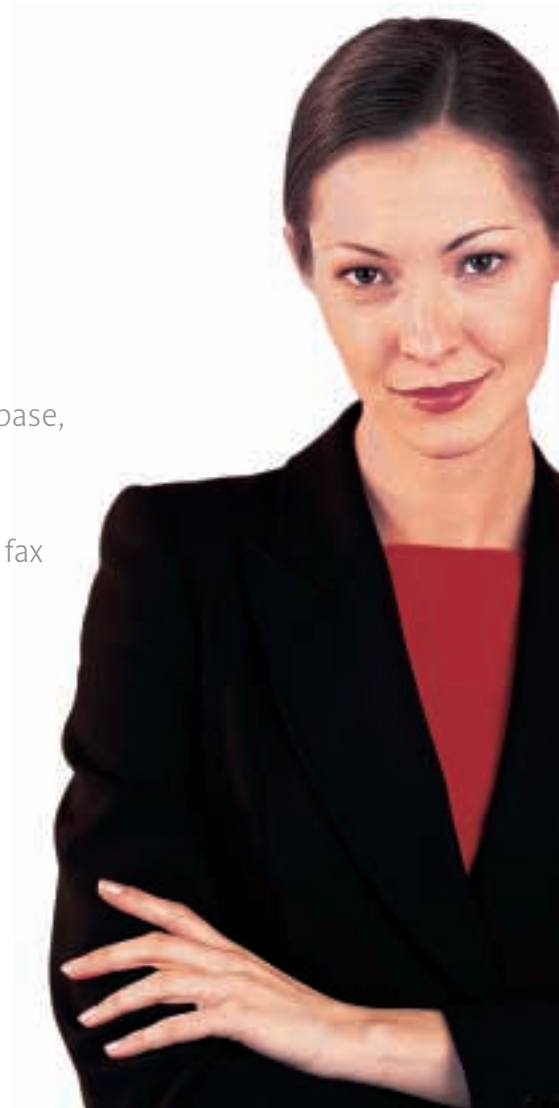
NSA-01

Network Scanning Adapter

*Scan & send your documents
in just a few easy steps*



- LAN-based distribution to a database, FTP server or printer
- Delivery by email, fax or internet fax
- Pen-operated LCD touch panel
- Supports over 1,000 users
- Password protection for secure access

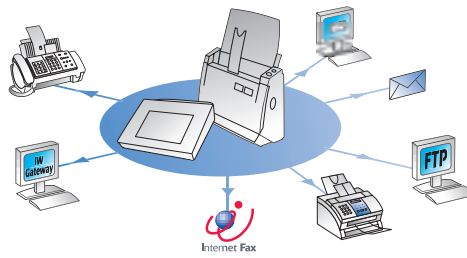


EASE AND EFFICIENCY

With the Network Scanning Adapter NSA-01, you can scan paper documents and distribute them to multiple users over your LAN, the internet, or even as a fax. Whilst compact, the NSA-01 includes a large, easy-to-use operation panel loaded with convenient features, enabling you to get the most out of your Canon document scanner.

SIMPLE CONNECTIVITY

The NSA-01 connects to your Canon document scanner with a SCSI cable, and to your network using 10Base-T/100Base-TX. There is an application programme for the NSA-01 that runs on a networked PC, but you do not need a dedicated computer to run the application.



COMPLETE CONVENIENCE

The NSA-01 offers handy functions to enhance your document scanning productivity with document scanning tasks.

Password protection ensures all your information stays secure. A keyboard-style display serves as your interface.

An address book allows you to select who will receive your data. You can also create groups of people and targets for document sending.

Scanner settings lets you adjust brightness, scan resolution, and other scan settings to best match your job, direct from the NSA-01.

Different file formats are supported, including PDF with embedded OCR data.

Additional features include: • Search functions for address searches • email messages with signatures added • Log files of scanner use, exportable in CSV format • Power saving mode.

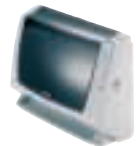
NSA-01 Specifications

Main unit	
Type	Desktop-type network scanning adapter
Operation panel	5.6-inch LCD touch panel
Scanner interface	SCSI-2 (50-pin half-pitch)
Network connector	RJ-45 (10Base-T/100Base-TX)
Power supply	DC15V
Power consumption	Max. 9W
AC adapters	220 - 240V
Operating environment	10 - 32.5 °C
Dimensions (W x D x H)	197 x 160 x 49 mm
Weight	0.76 kg (including touch pen)

System specifications	
Compatible network	Microsoft Windows network based
Operating Systems	Microsoft Windows 98 SE, Windows Me, Windows NT4.0 Workstation/Server, Windows 2000 Professional/Server, Windows XP Professional
Network protocol	TCP/IP
IP address	Fixed address or automatic assignment (DHCP supported)
Data receivers	Shared folder, printer, FTP server, fax, email, Internet fax, Canon iW Gateway, multicasting transmission
Control PC	CPU: Pentium II 400 Mhz or faster; RAM: 256MB or more; 300MB or more free hard disk space
Compatible scanners	DR-2080C, DR-3060, DR-3080C

™ All company and/or product names are trademarks and/or registered trademarks of their respective manufacturers in their markets and/or countries. Windows is a registered trademark of the Microsoft Corporation of the US both in the US and in other countries. Canon reserves the right to change specifications without notice.

CANON'S RANGE OF COMPATIBLE SCANNERS



DR-2080C



DR-3060



DR-3080C

you can
Canon

Canon Electronics Inc.
1248, Shimokagemori, Chichibu-shi, Saitama
369-1892, Japan
www.canon-elec.co.jp

Europe, Africa and Middle East
Canon Europa N.V.
P.O. Box 2262, 1180 EG Amstelveen,
the Netherlands
www.canon-europe.com

English UK Edition
© Canon Europa N.V 2003 (0303)



Canon (U.K.) Limited
Woodhatch, Reigate
Surrey RH2 8BF
Telephone No: 01737 220000
Facsimile No: 01737 220022
www.canon.co.uk